

The logo for the All-Party Parliamentary Group on Artificial Intelligence (aippg), featuring the letters 'ai' in red and 'ppg' in black.The logo for the All-Party Parliamentary Group (appg), featuring a crown icon above the letters 'appg'.The logo for the All-Party Parliamentary Group (appg), featuring a crown icon above the letters 'appg'.The logo for the All-Party Parliamentary Group on Artificial Intelligence (aippg), featuring the letters 'ai' in red and 'ppg' in black.

PROGRAMME

EMBRACING THE AI REVOLUTION

2023 | 2024

All-Party Parliamentary Group on
Artificial Intelligence

A society empowered to seize the benefits of AI and protected against potential risks.



[https://bicpavilion.com/
about/appg-artificial-intelligence](https://bicpavilion.com/about/appg-artificial-intelligence)



appg
[@biginnovationcentre.com](mailto:appg@biginnovationcentre.com)



@APPG_AI

Secretariat



Big Innovation Centre | <https://www.biginnovationcentre.com/>
Registered in England and Wales No. 8613849 | 14-16 Dowgate Hill, London EC4R 2SU

Contents

Secretariat	1
APPG AI Sponsors	3
1. Introduction	4
2. Governance	5
2.1 APPG AI Officers	5
List of APPG AI Officers	5
2.2 Parliamentary Members	6
List of Parliamentary Members – House of Commons	6
List of Parliamentary Members – House of Lords	6
2.3 Permanent Advisory Board	7
List of Permanent Advisory Board Members	7
2.4 Secretariat	8
List of Secretariat	8
3. Activities	9
3.1 Parliamentary Evidence Meetings	9
Evidence Meetings in 2023	9
Evidence Meetings in 2024	11
3.2 Advisory Board Meetings	11
Advisory Board Meetings 2023	12
Advisory Board Meetings 2024	12
3.3 Receptions	13
Receptions 2023	13
Receptions 2024	13
4. Output	14
4.1 AI Parliamentary Briefs	14
4.2 Video Recordings of Parliamentary Evidence Meetings	14
5. Community & Membership	15
6. Sponsorship	16
7. Timetable	17
APPG AI 2023-2024 Key Dates	17

APPG AI Sponsors

The Group supporters – AMI Limited, British Standards Institution, Brunel University London, CMS Cameron McKenna Nabarro Olswang, Deloitte, Ernst & Young, Innovate UK - UKRI, Osborne Clarke, and Rialto – enable us to raise the ambition of what we can achieve.



1. Introduction

The All-Party Parliamentary Group on Artificial Intelligence (APPG AI) was set up in January 2017 with the aim to explore the impact and implications of Artificial Intelligence. The group brings evidence, use cases and future policy scenarios into UK Parliament to consider the economic, social, and ethical implications of developing and deploying AI.

All-Party Parliamentary Groups (APPGs) are informal all-party groups in UK Parliament. They are run by and for Members of the Commons and Lords. The APPG AI encourages participation from business, academics, policy bodies, and representatives of the civil society; and work on strengthening the connections with multilateral organisations regarding international AI initiatives.

Big Innovation Centre is the appointed Secretariat and research hub for the APPG AI.

The APPG AI functions as the permanent authoritative voice within UK Parliament (House of Commons and House of Lords) on all AI-related matters. It has become a key reference point for policymakers, business, regulators, academia, and entrepreneurs on Artificial Intelligence, especially in the UK.

Our method of working is research, round tables, webinars, showcasing, taskforces, and events.

Focus areas

FOCUS: THE UNIVERSE OF AI	FOCUS: POLICY AREAS	POLICY CONSULTATIONS:
Automated reasoning & decision making Autonomous systems Face & emotion recognition Machine learning Multi-agent systems Natural language understanding Semantic web Smart living (e.g., cities) Voice recognition Digital diagnostics	Data policy & governance (public, business, personal) Education - skills - jobs - the future of work Accountability & ethics Facial recognition National security/cybersecurity Sustainability: Health care services (including for COVID19) and climate change Information intelligence and information superiority Digital and physical infrastructure Innovation, entrepreneurship and the economy	AI Strategy consultation Data Strategy consultation Corporate Governance consultation. Upcoming and ad-hoc government consultations.

2. Governance

The APPG AI Governance is broken into four subgroups: the APPG AI Officers, the APPG AI Secretariat, the APPG AI Permanent Advisory Board, and the APPG AI Expert Advisers.

2.1 APPG AI Officers

The Officers include elected members from the House of Commons and House of Lords.

List of APPG AI Officers



**STEPHEN
METCALFE MP**
APPG AI Chair,
Conservative



**LORD CLEMENT-
JONES**
APPG AI Chair,
Lib Dem



**SIR PETER
BOTTOMLEY
MP**
Vice Chair,
Conservative



**THE EARL OF
ERROLL**
Vice Chair,
Crossbench



**PATRICK
GRADY MP**
Vice Chair, SNP



**CHRIS GREEN
MP**
Secretary,
Conservative



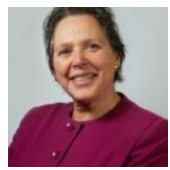
**SIR MARK
HENDRICK MP**
Vice Chair,
Labour



**LORD
JANVRIN**
Vice Chair,
Crossbench



**LORD KNIGHT
OF WEYMOUTH**
Vice Chair
Labour



**BARONESS
SUSAN KRAMER**
Vice Chair, Lib
Dem



**JUSTIN
MADDERS MP**
Vice Chair,
Labour



**BARONESS
MCGREGOR-
SMITH**
Vice Chair,
Conservative



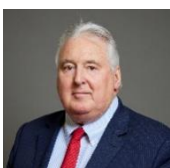
**CAROL
MONAGHAN
MP**
Vice Chair, SNP



**THE LORD
BISHOP OF
OXFORD**
Treasurer



**BARONESS
ROCK**
Vice Chair,
Conservative



**VISCOUNT
STANSGATE**
Vice Chair,
Labour



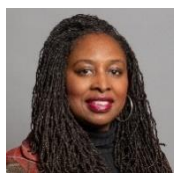
LORD WILLETS
Vice Chair,
Conservative

2.2 Parliamentary Members

List of Parliamentary Members – House of Commons



Anthony Browne MP,
Conservative



Dawn Butler MP,
Labour



Rt Hon Liam Byrne MP,
Labour



Ruth Cadbury MP,
Labour



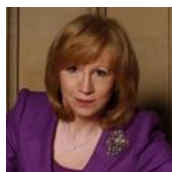
Jon Cruddas MP,
Labour



Clive Efford MP,
Labour



Simon Fell MP,
Conservative



Dame Eleanor Laing MP,
Conservative



Scott Mann MP,
Conservative



Anna McMorrin MP,
Labour



Damien Moore MP,
Conservative



Layla Moran MP,
Liberal Democrat



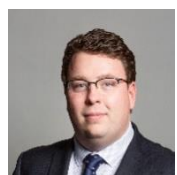
Lee Rowley MP,
Conservative



Dean Russell MP,
Conservative



Alex Sobel MP,
Labour



Gary Sambrook MP,
Conservative



Craig Tracey MP,
Conservative



Matt Warman MP,
Conservative

List of Parliamentary Members – House of Lords



Lord Fairfax of Cameron,
Conservative



The Earl of Glasgow,
Liberal Democrat



Lord Haskel,
Labour



Lord Richard Inglewood,
Non-affiliated



Lord Ravensdale
Crossbench



**Lord Taylor of
Warwick,**
Conservative



Lord Wei,
Conservative

2.3 Permanent Advisory Board

Representatives from our Partner organisations sit on the Permanent Advisory Board.

List of Permanent Advisory Board Members



LOUIS HALPERN
Chairman, AMI Limited



DR SCOTT STEEDMAN
Director of Standards (SP), BSI
Group



PROF. ASHLEY BRAGANZA
Professor of Organisational
Transformational Change,
Brunel University London



CHARLES KERRIGAN
Partner, Banking & International
Finance Team, CMS



SULABH SORAL
Chief AI Officer, Deloitte
Consulting



GITA SHIVARATTAN
Head of Data Protection Law
Services, EY UK



**Innovate
UK**



SARA EL-HANFY
Head of AI & Machine Learning,
Innovate UK



JOHN BUYERS
Partner, Osborne Clarke



RICHARD CHIUMENTO
Director, Rialto

2.4 Secretariat

Big Innovation Centre is appointed the Group's Secretariat. The Secretariat is responsible for delivering the programme for the APPG AI, organising the outputs, advocacy and outreach, and managing stakeholder relationships and partnerships.

List of Secretariat



PROFESSOR BIRGITTE ANDERSEN
CEO & Co-Creator



GEORGE FARRER
Project Coordinator

3. Activities

The APPG AI Officers and Secretariat will be responsible for organising and facilitating several mandatory events, including 6 Evidence Meetings and 4 Advisory Board Meetings per year.

3.1 Parliamentary Evidence Meetings

Evidence meetings will be recorded and available online for the public.

Evidence Meetings in 2023 (please be aware that dates/locations might change throughout the year)

Type	Theme	Key Questions	Date
Evidence Meeting Enterprise Adoption of AI	AI in the Boardroom	<ul style="list-style-type: none"> Explain AI deployment in executive level decisions Are current considerations 'AI for the board' up to date? <p>What is the state of adoption of AI governance, by corporate boards?</p>	23 rd January 2023 5.30-7pm
Evidence Meeting AI use in Research & Development	Big Brother or Big Benefit? Consumer Intelligence & Advanced Data Analytics	<ul style="list-style-type: none"> What is the overview of the business and consumer intelligence markets with respect to using AI in business models and for risk assessments across all sectors (finance, manufacturing, technology platforms, and so forth)? How is AI applied in R&D to stimulate business models and for risk mitigation? How does AI create information superiority and economic superiority? Is artificial intelligence (AI) a threat to national security, or an opportunity? 	13 th March 2023 5.30-7pm
Evidence Meeting Industrial Policy & Artificial Intelligence	What should our AI Industrial Strategy be?	<ul style="list-style-type: none"> How can we put the UK at the forefront of the AI agenda? What should Government do to make sure the whole of the UK is benefitting from AI? How should the UK focus on sectors and regions that aren't particularly benefitting from the use of AI at the moment? 	15 th May 2023 5.30-7pm
Discussion Panel	Feedback on the AI White Paper	<ul style="list-style-type: none"> What is included, and what is missing in the UK Government's AI White Paper? 	13 th June 2023 5.30-7pm

		<ul style="list-style-type: none"> • What is required for more effective and efficient adoption of AI in the UK? • How can the UK become a world leader in AI Governance? 	
Evidence Meeting AI in Education	Democratising Artificial Intelligence Generative AI as a Catalyst for Change in Education	<ul style="list-style-type: none"> • How is AI being used currently in schools and other educational settings? • Have generative AI tools, such as ChatGPT, changed the way education and training takes place? If so, how? • What can the Government do to increase digital literacy and AI-related life skills in the UK? • What is the current state of digital inclusion, digital literacy, and digital life skills in the UK? 	11 th September 2023 5.30-7pm
Evidence Meeting AI Sustainability	UN Sustainable Development Goals: Where are we now, and where can AI help?	<ul style="list-style-type: none"> • How can AI help to achieve the UN's sustainable development goals? Which ones can mostly be applied to the power of AI? • Where does AI create a problem for SDGs? For example, does the computing power required to help AI function effectively counteract the ambitions of the SDGs? Other examples, does AI create economy inequality? • What global agreements and measures are required in order to enable sustainable development? 	23 rd October 2023 5.30-7pm
Evidence Meeting AI Health	AI Use in Healthcare & Telehealth	<ul style="list-style-type: none"> • What is the update of using AI in telehealth and other digital health care solutions adopted on wearable technology (mobile phones and pacemakers, etc.)? • How can the national health care (NHS) adopt the 'best' telehealth solutions to lower the growing health burden on society? How shall the public-private partnerships on telehealth be managed? • What are the emerging standards? 	13 th November 2023 5.30-7pm

Evidence Meetings in 2024 (please be aware that dates/locations might change throughout the year)

Type	Theme	Key Questions	Date
Evidence Meeting AI Sustainability	AI and Sustainability: Smart Cities and Clean Technologies	<ul style="list-style-type: none"> How will 5G transform smart cities? Smart housing for efficient energy and water use Intelligent waste management in cities Investment into clean infrastructures 	22 nd January 2024 5.30-7pm
Evidence Meeting AI Adoption	AI in Professional Services: (1) AI & Financial Services: A New Paradigm for the Banking Sector (2) AI in Law: New Opportunities for the Legal Sector?	<u>AI & Financial Services:</u> <ul style="list-style-type: none"> What is the current state of adoption of AI in Financial Services? In what areas of finance (e.g., Corporate Finance, Accountancy, Loans) will AI have the greatest impact? How can we ensure that the use of AI in financial services benefits all the relevant stakeholders (i.e., firms, consumers & markets)? <u>AI in Law:</u> <ul style="list-style-type: none"> How can AI be adopted successfully into the legal sector? What benefits can AI bring to legal practices in the UK? (e.g., efficiency and cost-saving benefits) Would customers be more likely to use a particular law firm if they are using AI in their work and routines? 	11 th March 2024
Evidence Meeting AI Applications	AI, Augmented Reality, Virtual Reality & The Metaverse: Changing Standards on how we Live, Work & Play	<ul style="list-style-type: none"> How are sectors being transformed by AR, VR and the Metaverse? What does this mean for how we live, work and play? What is the new normal, and what are the emerging standards? What are the benefits and challenges AR brings to the workplace? (e.g. increased efficiency & productivity) To our 'smart' and virtual homes? How we socialise and party? 	13 th May 2024
Evidence Meeting Education	AI in Education: How will AI Change the	<ul style="list-style-type: none"> How will AI shape the teaching experience of the future? In which specific areas can the deployment of AI systems support teachers and students? 	14 th October 2024

	Classroom of the Future	<ul style="list-style-type: none"> How can AI improve the educational experience (motivation and curiosity) from childhood onwards 	
Evidence Meeting	What is AI? How has AI changed in the past 7 years	<ul style="list-style-type: none"> Where are we now with the development and adoption of AI? What has been the rate of change of AI? What are the implications of this technological change? What are the main features of AI now, compared to 5 years ago? What are the UK's strengths in AI, compared to other countries? How has generative AI, like ChatGPT, changed the way we use technology? 	11 th November 2024

3.2 Advisory Board Meetings

There will be quarterly advisory board meetings to co-set strategy on topics and provide feedback on the output in their specific subject areas.

Advisory Board Meetings 2023 and 2024

2023	2024
<ul style="list-style-type: none"> 20th February, 4:30 – 5:30 pm 15th, May, 4:30 – 5:30 pm 11th September, 4:30 – 5:30 pm 4th December, 5:30 - 6:30 pm 	<ul style="list-style-type: none"> 19th February, 4:30 – 5:30 pm 13th May, 4:30 – 5:30 pm 9th September, 4:30 – 5:30 pm 2nd December, 5:30 - 6:30 pm

3.3 Receptions

The APPG AI will organise two receptions to celebrate the activities and outputs of the group. The Spring Party will be held in partnership with the Big Innovation Centre at an external venue, and the Christmas Reception at the House of Lords Terrace.

Receptions 2023

Type	Date	Location
Chaired APPG AI Dinner	TBC	Houses of Parliament
APPG AI Christmas Reception	4 th December 2023	Parliament Terrace

Receptions 2024

Type	Date	Location
Chaired APPG AI Dinner	TBC	Houses of Parliament
APPG AI Christmas Reception	December 2024	Parliament Terrace

4. Output

The Secretariat will be responsible for delivering the following outputs.

4.1 AI Parliamentary Briefs

'AI Parliamentary Briefs' will be created for the House of Commons and the House of Lords following each Evidence Meeting. The reports will feature overviews of each Evidence Meeting and the written evidence submitted by the respective stakeholders. Furthermore, the reports will aim to inform Parliamentarians the key issues around AI and showcase handy facts, news, and relevant findings in the space of AI.

The reports will be available for the public on the APPG AI website.

4.2 Recordings of Parliamentary Evidence Meetings

Each Parliamentary evidence meeting will be recorded and published on the APPG AI website approximately two weeks after the event.

5. Community and Membership

Join the APPG AI network of business leaders, entrepreneurs, investors, academics, politicians, policymakers, and civil society.

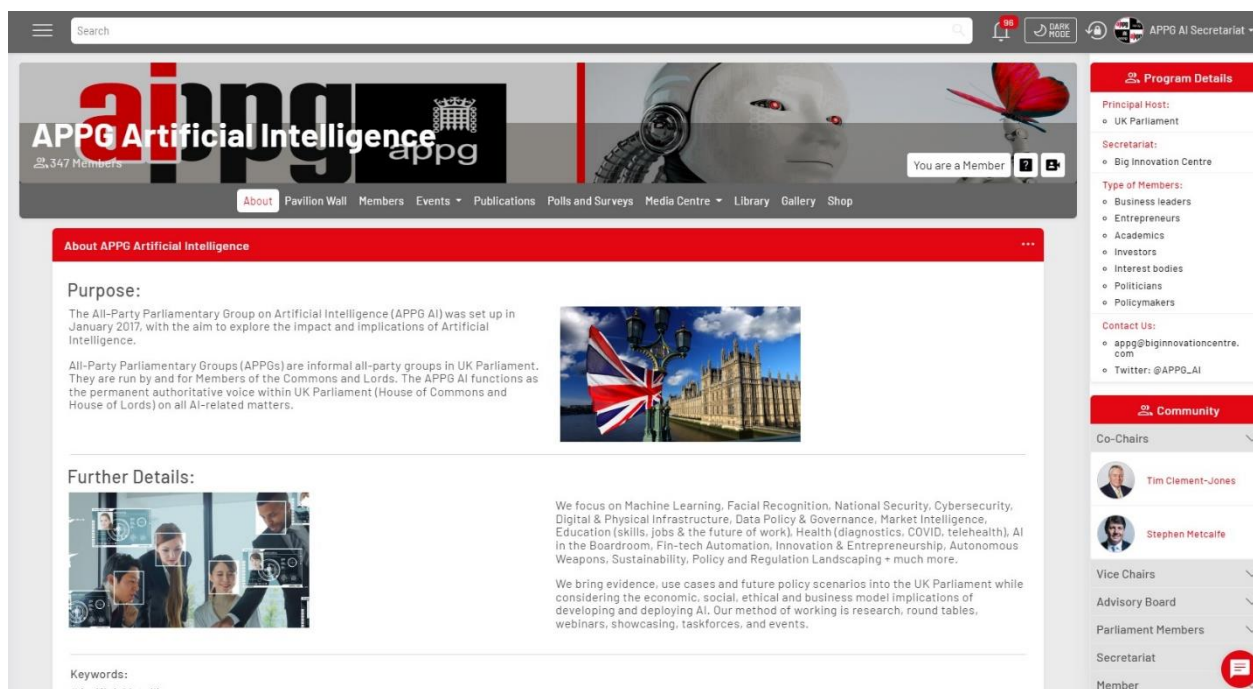
Opportunity to impact the financial, social, political, and regulatory future with Artificial Intelligence and other emerging technologies.

Contribute to thought leadership and deep dives.

Unique events, showcases, evidence forums and receptions.

Join from this link!

Go to <https://bicpavilion.com/about/appg-artificial-intelligence> to sign up and explore all our activities, events, videos, publications, gallery, library and participate in our online interactive forum.



The screenshot shows the homepage of the APPG Artificial Intelligence website. The header features the APPG logo and navigation links: About, Pavilion Wall, Members, Events, Publications, Polls and Surveys, Media Centre, Library, Gallery, and Shop. A search bar is located in the top left, and a 'You are a Member' button is in the top right. The main content area is titled 'About APPG Artificial Intelligence' and includes a 'Purpose' section, a 'Further Details' section with a video thumbnail, and a 'Keywords' section. The right sidebar contains 'Program Details' (Principal Host: UK Parliament, Secretariat: Big Innovation Centre, Type of Members: Business leaders, Entrepreneurs, Academics, Investors, Interest bodies, Politicians, Policymakers, Contact Us: appg@biginnovationcentre.com, Twitter: @APPG_AI) and a 'Community' section (Co-Chairs: Tim Clement-Jones, Stephen Metcalfe, Vice Chairs, Advisory Board, Parliament Members, Secretariat, Member).

APPG Artificial Intelligence
347 Members

About APPG Artificial Intelligence

Purpose:
The All-Party Parliamentary Group on Artificial Intelligence (APPG AI) was set up in January 2017, with the aim to explore the impact and implications of Artificial Intelligence.

All-Party Parliamentary Groups (APPGs) are informal all-party groups in UK Parliament. They are run by and for Members of the Commons and Lords. The APPG AI functions as the permanent authoritative voice within UK Parliament (House of Commons and House of Lords) on all AI-related matters.

Further Details:

We focus on Machine Learning, Facial Recognition, National Security, Cybersecurity, Digital & Physical Infrastructure, Data Policy & Governance, Market Intelligence, Education (skills, jobs & the future of work), Health (diagnostics, COVID, telehealth), AI in the Boardroom, Fin-tech Automation, Innovation & Entrepreneurship, Autonomous Weapons, Sustainability, Policy and Regulation Landscaping + much more.

We bring evidence, use cases and future policy scenarios into the UK Parliament while considering the economic, social, ethical and business model implications of developing and deploying AI. Our method of working is research, round tables, webinars, showcasing, taskforces, and events.

Keywords:
#ArtificialIntelligence

Program Details

Principal Host:
• UK Parliament

Secretariat:
• Big Innovation Centre

Type of Members:
• Business leaders
• Entrepreneurs
• Academics
• Investors
• Interest bodies
• Politicians
• Policymakers

Contact Us:
• appg@biginnovationcentre.com
• Twitter: @APPG_AI

Community

Co-Chairs
• Tim Clement-Jones
• Stephen Metcalfe

Vice Chairs
•

Advisory Board
•

Parliament Members
•

Secretariat
•

Member
•

6. Sponsorship

The APPG AI is not supported by the national budget, or tax payment, but is sustained by sponsorship and membership.

Contributions to support our work and vision “To explore the impact and implications of Artificial Intelligence - focus on policy, business and society” are hugely valued. Sponsorship goes to research, writing and publishing publications, events, video recordings and editing, sourcing fantastic speakers, website, communications, policy impact, operations, and related.

For information on the general sponsorship package please Email the APPG AI Secretariat.

Contact:

Head Office: appg@biginnovationcentre.com

or

CEO of Big Innovation Centre Prof. Birgitte Andersen (b.andersen@biginnovationcentre.com)

7. Timetable

APPG AI 2023-2024 Key Dates

2023

Date	Time (PM)	What meeting
Jan 23	5:30 – 7:00	Evidence Meeting
Feb 20	4:30 – 5:30	Advisory Board Meeting
Mar 13	5:30 – 7:00	Evidence Meeting
May 15	5:30 – 7:00	Evidence Meeting
May 15	4:30 – 5:30	Advisory Board Meeting
Jun 13	5:30 – 7:00	Evidence Meeting
Sep 11	4:30 – 5:30	Advisory Board Meeting
Oct 23	5:30 – 7:00	Evidence Meeting
Nov 13	5:30- 7:00	Evidence Meeting
Dec 4	5:30 – 6:30	Advisory Board Meeting
Dec 4	6:30 – 10:00	AI Christmas Reception

2024

Date	Time (PM)	What meeting
Jan 22	5:30 – 7:00	Evidence Meeting
Feb 19	4:30 – 5:30	Advisory Board Meeting
Mar 11	5:30 – 7:00	Evidence Meeting
May 13	5:30 – 7:00	Evidence Meeting
May 13	4:30 – 5:30	Advisory Board Meeting
Sep 9	4:30 – 5:30	Advisory Board Meeting
Oct 14	5:30 – 7:00	Evidence Meeting
Nov 11	5:30- 7:00	Evidence Meeting
Dec 2	5:30 – 6:30	Advisory Board Meeting
Dec 2	6:30 – 10:00	AI Christmas Reception



**BIG
INNOVATION
CENTRE**

All-Party Parliamentary Group on Artificial Intelligence (APPG AI) Secretariat

Big Innovation Centre

Registered in England and Wales No. 8613849 | 14-16 Dowgate Hill, London EC4R 2SU

Email: appg@biginnovationcentre.com

www.appg-ai.org



<https://bicpavilion.com/about/appg-artificial-intelligence>